

# Geography Decision Making

**A2-3**

[www.ccea.org.uk](http://www.ccea.org.uk)

Stephen Roulston,  
formerly HoD Geography and  
PGCE Geography Lecturer.

# What is this part of the A2 examination?

- 1 hour and 30 minutes
- Worth 12% of the total A Level marks
- Decision Making Exercise ... so what is that exactly?

# It is...

- A REAL case study
- A geographical issue
- With conflicting values
- It requires you to:
  - understand an unseen context;
  - use unfamiliar terminology;
  - produce a report; and
  - make a recommendation



# Text on the front of the examination paper

“You are strongly recommended to spend 30 minutes reading the question and selecting appropriate information before attempting to write your report”

Geographical is

Fracking for shale gas

Waste to energy plants

Solar farms





# Recent contexts include

- Ecotown near Norwich



# Recent contexts include

- Ecotown near Norwich
- New golf course in Co Clare





# Recent contexts include

- Ecotown near Norwich
- New golf course in Co Clare
- Gasfield and pipeline in Mayo





# Recent contexts include

- Ecotown near Norwich
- New golf course in Co Clare
- Gasfield and pipeline in Mayo
- Waste to Energy plant, Co. Meath



# Recent contexts include

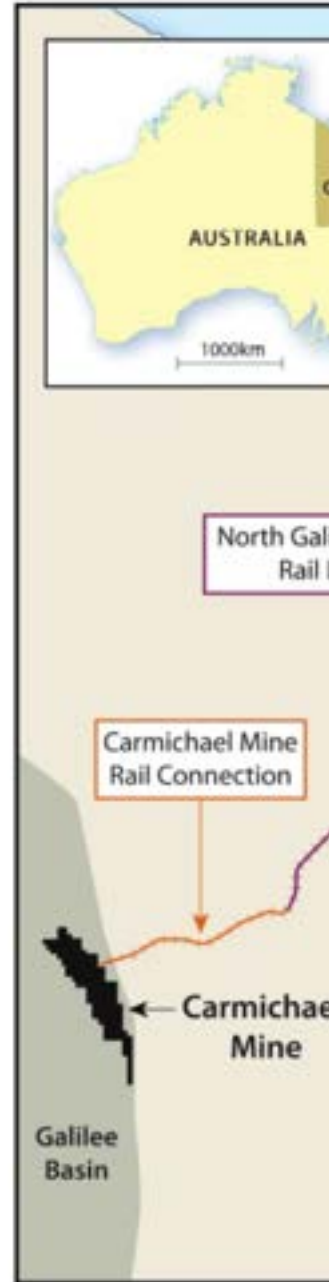
- Ecotown near Norwich
- New golf course in Co Clare
- Gasfield and pipeline in Mayo
- Waste to Energy plant, Co. Meath
- Bypass in Aberdeen
- Bridge in London
- Ferry terminal in Dun Laoghaire
- Potash mine in North Your Moors
- Airport in St Helena
- Salmon farm in Galway Bay...

All different...

**All the same...**

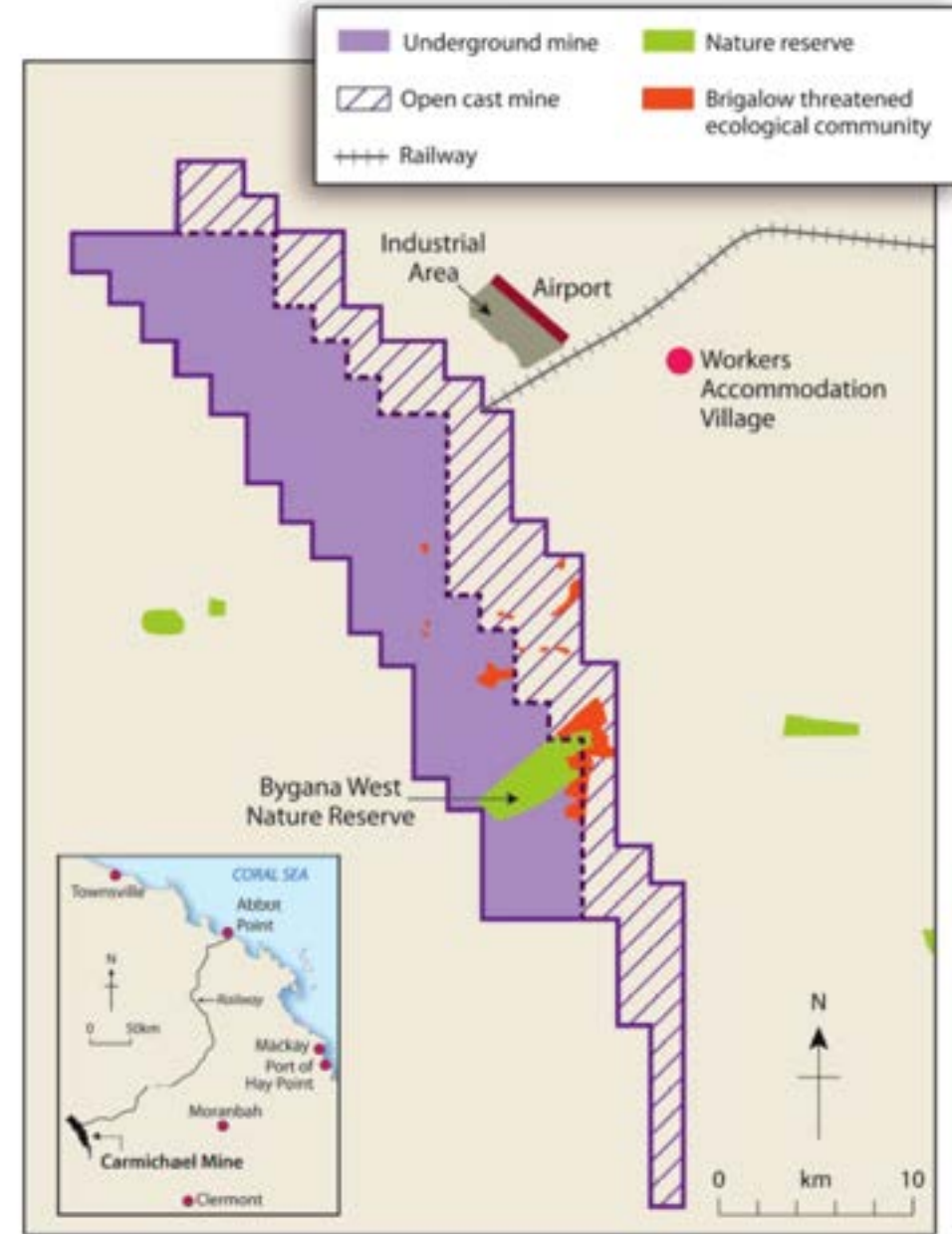
Typically you will get  
Maps

MAP SHOWING THE LOCATION



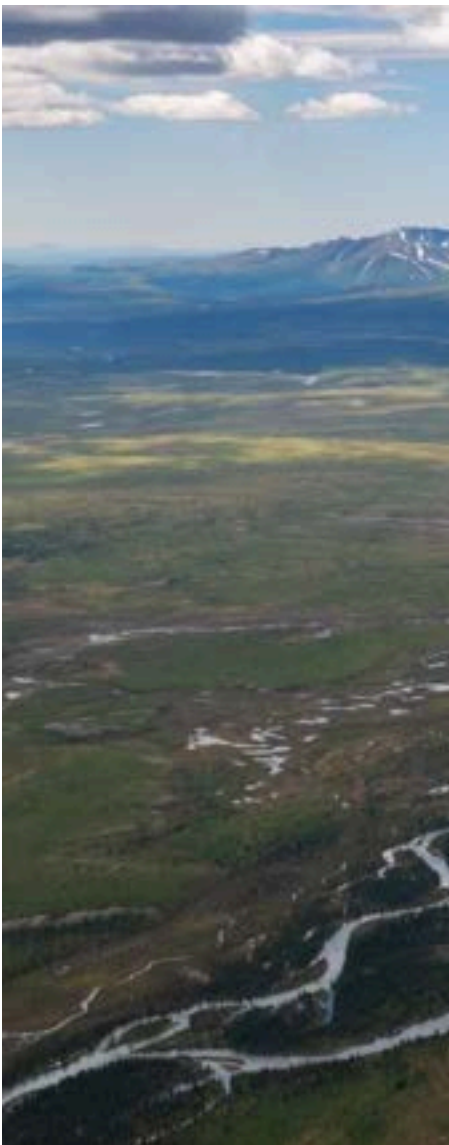
RESOURCE 1B

DETAILED MAP OF THE DEVELOPMENT





Typically you will get  
Photographs





Viewpoint

Angle of View 73° Horizontal

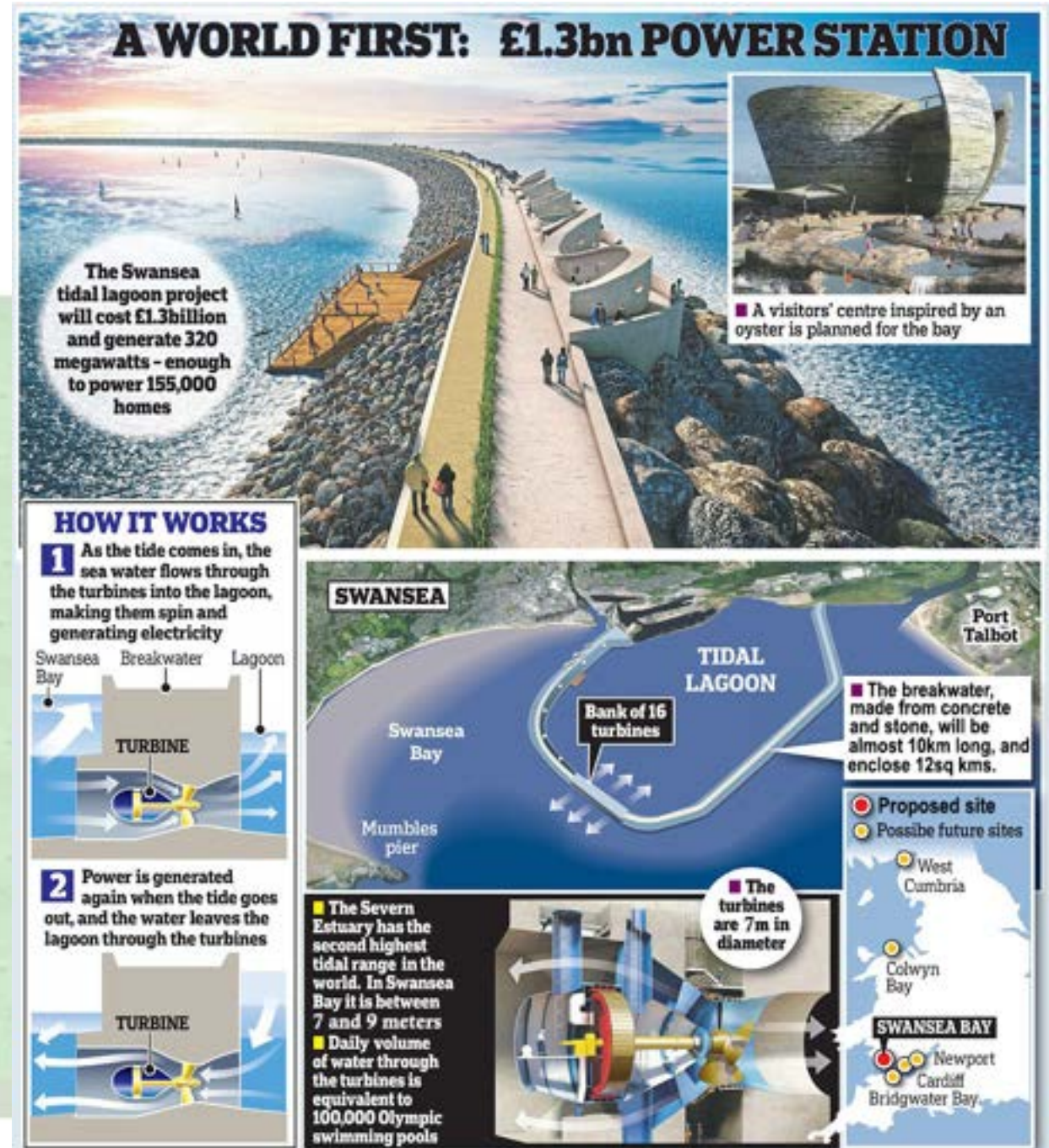
mm MEDIA GROUP © 2014

VISUAL IMPACT ASSESSMENT T. 353 1 2899 039

Project :	Dun Laoghaire Cruise Berth	Issue Date:	10-04-15	Photo Info:	09-09-2014 14:47	VIEW 05	PROPOSED
-----------	----------------------------	-------------	----------	-------------	------------------	---------	----------



Typically you will get  
Infographics



Typically you will get

## Table

**Table 1: Demand / Supply Balance (Million Litres per Day: mdl)**

Year	Production from Existing Sources	Peak Dublin Region Demand
2010	560	590
2016	630	630
2020	630	660
2031	630	770
2040	630	880



# Typically you will get

## Text

### ARGUMENTS IN FAVOUR OF THE PROPOSAL

There are many benefits of the scheme. The Deep Sea Salmon project will create significant and sustainable employment. When 15000 tonne production levels are reached, there will be full-time direct employment for 350 people, rearing the young salmon, working on the salmon enclosures at sea and processing and packaging the fish for sale. This scale of employment will create €14.5 million each year in wages, much of which will be spent locally. Indirect employment will create a further 150 jobs, supplying fish feed, and in transportation and other services. That scale of employment would be significant anywhere but, on the western coast of Ireland, it is particularly welcomed. Much of the workforce is anticipated to be residents of Inisheer, with safe and easy access to the salmon farming pens. Aquaculture also increases the potential of tourism in the Aran Islands, something which oyster farmers in Brittany, France have exploited.

These sites are ideal for deep sea aquaculture as the water depth is over 30 metres. There is good water exchange in Galway Bay with water from the Atlantic Ocean constantly replacing it. Shallower coastal locations lack this advantage. The two sites are well separated which removes any potential of cross contamination. However, the whole operation is close to vital infrastructure with landing facilities in Cill Rónáin in Inishmore (12kms) and Galway Port (29kms) nearby. The sites have been carefully chosen to avoid areas of marine leisure activity. It is also sited to avoid known accumulations of maerl, an environmentally important coral-like deposit on the sea-bed, and sea grass, another important marine habitat. It also avoids Natura 2000 sites, which are natural areas protected by the European Union.

# Typically you will get

## Quotations

***Donal Maguire, Head of Aquaculture Development, BIM***

"With island and coastal communities hit hard by emigration and unemployment following Ireland's economic collapse, jobs are at the heart of this debate. We badly, badly need the jobs and exports."

***Inis Oirr (Inisheer) Co-operative, letter of objection***

"It is absolutely clear this project offers no benefit to Inis Oirr ... the community will have no meaningful voice or control over the project. We will be at the mercy of a multinational and relying on them to put ethics ahead of profits... the only way people from Inish Oirr would be in a position to seek employment related to the fish farm would be to move from the island. This is the scenario the islands and island communities are constantly battling to avoid."

So all different...

**But all the same...**

Each geographical issue is likely to have consequences which can be

**Economic**



Created by fajar hasyim  
from Noun Project



Created by David  
from Noun Project

**Social**

**Environmental**



Created by BornSymbols  
from Noun Project

These consequences can be positive or negative



For the purpose of this exercise you are required to assume the role of Perez Balladares, an independent consultant to the Panamanian Government.

# Role

	Marks	
Format	2	Each of the three sections must be clearly set out using the headings and sub-headings provided.
Role	2	You must adopt and maintain the stated role.
Graph	8	Draw a graph using all the data from Table A (found in Resource I), and incorporate it into the report at an appropriate place.

Your report must be structured as below		Marks		Guidance to Candidates
Heading	Sub-heading	Sub-section	Section	
1	Introduction	10	10	<b>A</b> Discuss the global needs for such a development and briefly describe the project.
3	The likely impact on:	(i) Panama's economy	12	<b>B</b> (i) The economic advantages to Panama of the proposed development and the counterarguments. (ii) The impact on the local environment and the counterarguments. (iii) The likely improvements to how efficiently the canal could run and the counterarguments.
		(ii) The local environment	10	
		(iii) The efficiency of the canal's operations	6	
2	Decision	10	10	<b>C</b> You must decide whether or not to recommend that the project should go ahead. State clearly your decision and justify it on the basis of the greater overall benefits.

You have to “adopt and maintain the stated role”

“My colleagues in the government have ...”

“... I will look at these in more detail”

“I have addressed this issue in making my decision ...”

“I am making this decision based on the facts I have been given ...”

“After discussion with my colleagues, we have decided that ...”

**Two of these get a role mark...**

You have to “adopt and maintain the stated role”

“My colleagues in the government have ...”

“... I will look at these in more detail”

“I have addressed this issue in making my decision ...”

“I am making this decision based on the facts I have been given ...”

“After discussion with my colleagues, we have decided that ...”

**Two of these get a role mark...**

You have to “adopt and maintain the stated role”

“My colleagues in the government have ...”

“... I will look at these in more detail”

“I have addressed this issue in making my decision ...”

“I am making this decision based on the facts I have been given ...”

“After discussion with my colleagues, we have decided that ...”

**Only two of these get a role mark...**



You have to “adopt and maintain the stated role”

“So far as my role as Advisor to the Federal Court in Australia is in relation to the proposed mine in the Galilee Basin, Australia, it is upon my decision as to whether the development should be permitted to go ahead. I will briefly describe the proposed project and discuss the need for it. I will then weigh up the positive and negative implications on people and the economy, and the impact on the environment and reach a decision as to whether it should or should not proceed to see if there is a need for the development.”

You have to “adopt and maintain the stated role”

“So far as my role as Advisor to the Federal Court in Australia is in relation to the proposed mine in the Galilee Basin, Australia, it is upon my decision as to whether the development should be permitted to go ahead. I will briefly describe the proposed project and discuss the need for it. I will then weigh up the positive and negative implications on people and the economy, and the impact on the environment and reach a decision as to whether it should or should not proceed to see if there is a need for the development.”

You have to “adopt and maintain the stated role”

**As Advisor to the Federal  
Court in Australia, I...**

You have to “adopt and maintain the stated role”

**As Advisor to the Federal  
Court in Australia, I...**

For the purpose of this exercise you are required to assume the role of Perez Balladares, an independent consultant to the Panamanian Government.

# Format

	Marks	
Format	2	Each of the three sections must be clearly set out using the headings and sub-headings provided.
Role	2	You must adopt and maintain the stated role.
Graph	8	Draw a graph using all the data from Table A (found in Resource I), and incorporate it into the report at an appropriate place.

Your report must be structured as below		Marks		Guidance to Candidates
Heading	Sub-heading	Sub-section	Section	
<b>A</b> Introduction		10	10	<b>A</b> Discuss the global needs for such a development and briefly describe the project.
<b>B</b> The likely impact on:	<b>(i)</b> Panama's economy	12	28	<b>B (i)</b> The economic advantages to Panama of the proposed development and the counterarguments. <b>(ii)</b> The impact on the local environment and the counterarguments. <b>(iii)</b> The likely improvements to how efficiently the canal could run and the counterarguments.
	<b>(ii)</b> The local environment	10		
	<b>(iii)</b> The efficiency of the canal's operations	6		
<b>C</b> Decision		10	10	<b>C</b> You must decide whether or not to recommend that the project should go ahead. State clearly your decision and justify it on the basis of the greater overall benefits.



There are 2 marks for format – you should get both.

Use the structure exactly as provided – do not try to improve upon/shorten, make clearer the headings and sub-headings provided.

1. The likely impact on the economy of Panama
2. The economy of Panama and the importance of the canal
3. The likely impact on Panama's economy
4. The likely impact on Panama's economy

Lose a mark

HEADING

SUB-HEADING

For the purpose of this exercise you are required to assume the role of Perez Balladares, an independent consultant to the Panamanian Government.

	Marks	
Format	2	Each of the three sections must be clearly set out using the headings and sub-headings provided.
Role	2	You must adopt and maintain the stated role.
Graph	8	Draw a graph using all the data from Table A (found in Resource I), and incorporate it into the report at an appropriate place.

Your report must be structured as below		Marks		Guidance to Candidates
Heading	Sub-heading	Sub-section	Section	
<b>A</b> Introduction		10	10	<b>A</b> Discuss the global needs for such a development and briefly describe the project.
<b>B</b> The likely impact on:	(i) Panama's economy	12	28	<b>B (i)</b> The economic advantages to Panama of the proposed development and the counterarguments.
	(ii) The local environment	10		<b>(ii)</b> The impact on the local environment and the counterarguments.
	(iii) The efficiency of the canal's operations	6		<b>(iii)</b> The likely improvements to how efficiently the canal could run and the counterarguments.
<b>C</b> Decision		10	10	<b>C</b> You must decide whether or not to recommend that the project should go ahead. State clearly your decision and justify it on the basis of the greater overall benefits.

- Do not use chunks of text from the resources if you want to be considered for all of the marks available
- You can use occasional phrases as a quotation, but only if you put it in quotation marks, **and do not overdo this**
- Don't copy out a paragraph changing an old word here, and there – **MAKE IT YOUR OWN!**

# More tips to maximise your marks

- Think in points... but don't write in bullet points
- Use precise figures where you can. Not 'a lot of' or 'quite a few' if you can retrieve the actual figure from the resources
- Quotations are a useful source but don't write them out again in full. Select a key part of the quotation to use:

*A local councillor described the development as  
a 'catalyst for growth'*

# More tips to maximise your marks

Master the specialist language of the issue and use it

Open Cast Mine

FIFO (Fly In Fly Out)

WHAs (World Heritage Areas)

Biodiversity Offsetting

Natura2000

BIM (Bord Iascaigh Mhara)

Maerl



# More tips to maximise your marks



Finish the paper – timing

There are **60 marks** to be earned in **90 minutes**, with around 30 minutes reading the question and Resource Booklet and planning your answer. So...

- Aim for **a mark a minute** in your writing time. A 6-mark task should take you about 6 minutes.
- Your graph may take you a little longer than 8 or so minutes so take this into account.
- Practice a paper on your own to get used to the timings.

For the purpose of this exercise you are required to assume the role of Perez Balladares, an independent consultant to the Panamanian Government.

# Graph

	Marks	
Format	2	Each of the three sections must be clearly set out using the headings and sub-headings provided.
Role	2	You must adopt and maintain the stated role.
Graph	8	Draw a graph using all the data from Table A (found in Resource I), and incorporate it into the report at an appropriate place.

Your report must be structured as below		Marks		Guidance to Candidates
Heading	Sub-heading	Sub-section	Section	
<b>A</b> Introduction		10	10	<b>A</b> Discuss the global needs for such a development and briefly describe the project.
<b>B</b> The likely impact on:	(i) Panama's economy	12	28	<b>B (i)</b> The economic advantages to Panama of the proposed development and the counterarguments.
	(ii) The local environment	10		<b>(ii)</b> The impact on the local environment and the counterarguments.
	(iii) The efficiency of the canal's operations	6		<b>(iii)</b> The likely improvements to how efficiently the canal could run and the counterarguments.
<b>C</b> Decision		10	10	<b>C</b> You must decide whether or not to recommend that the project should go ahead. State clearly your decision and justify it on the basis of the greater overall benefits.

# Drawing the graph...

Probably worth 8 marks so very important... don't forget it

Look carefully at the data

Decide on a technique

Graph paper or the booklet itself?

Select your scale with care

Use the title provided

Label both axes

Use a key, or other technique

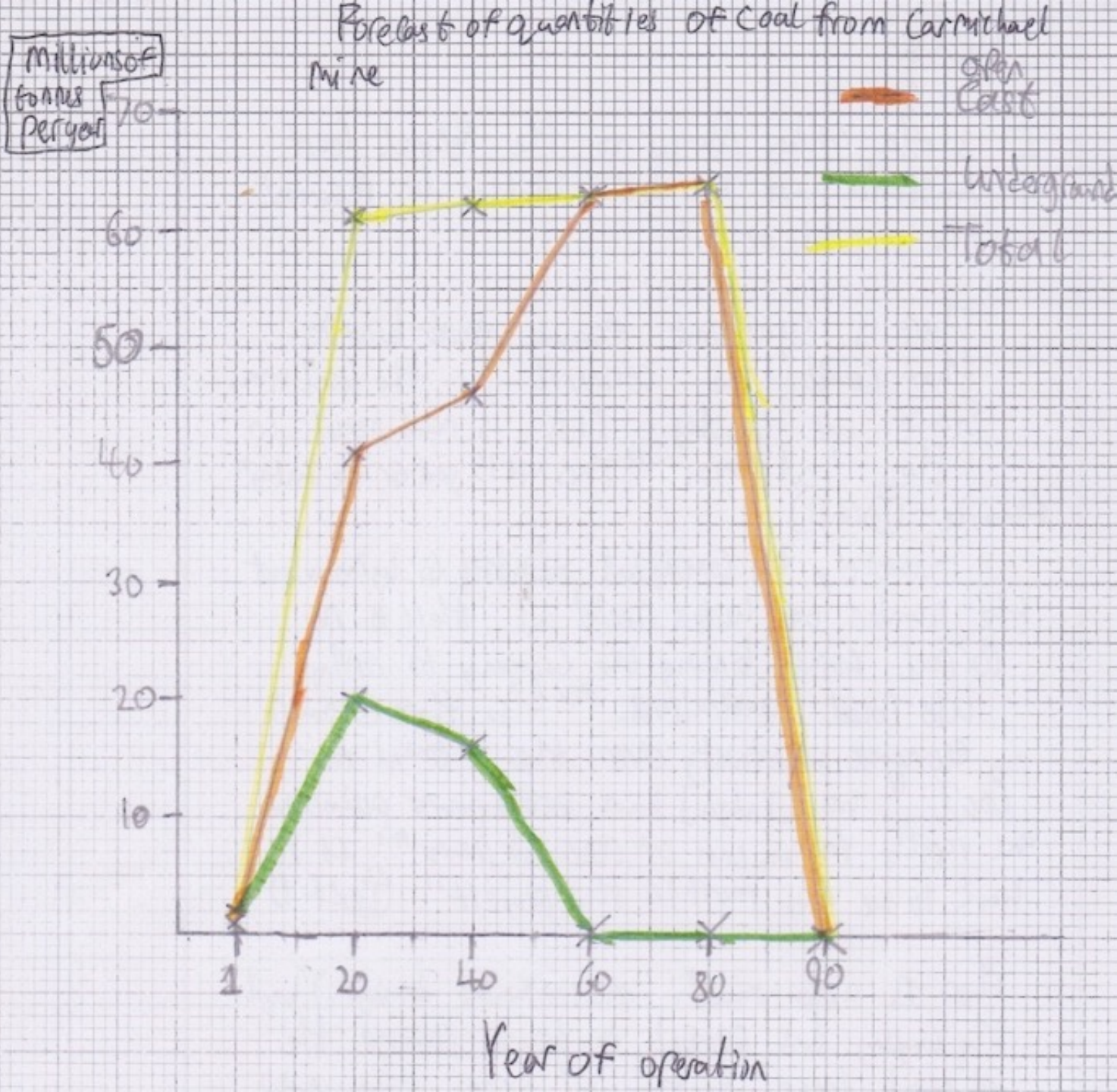
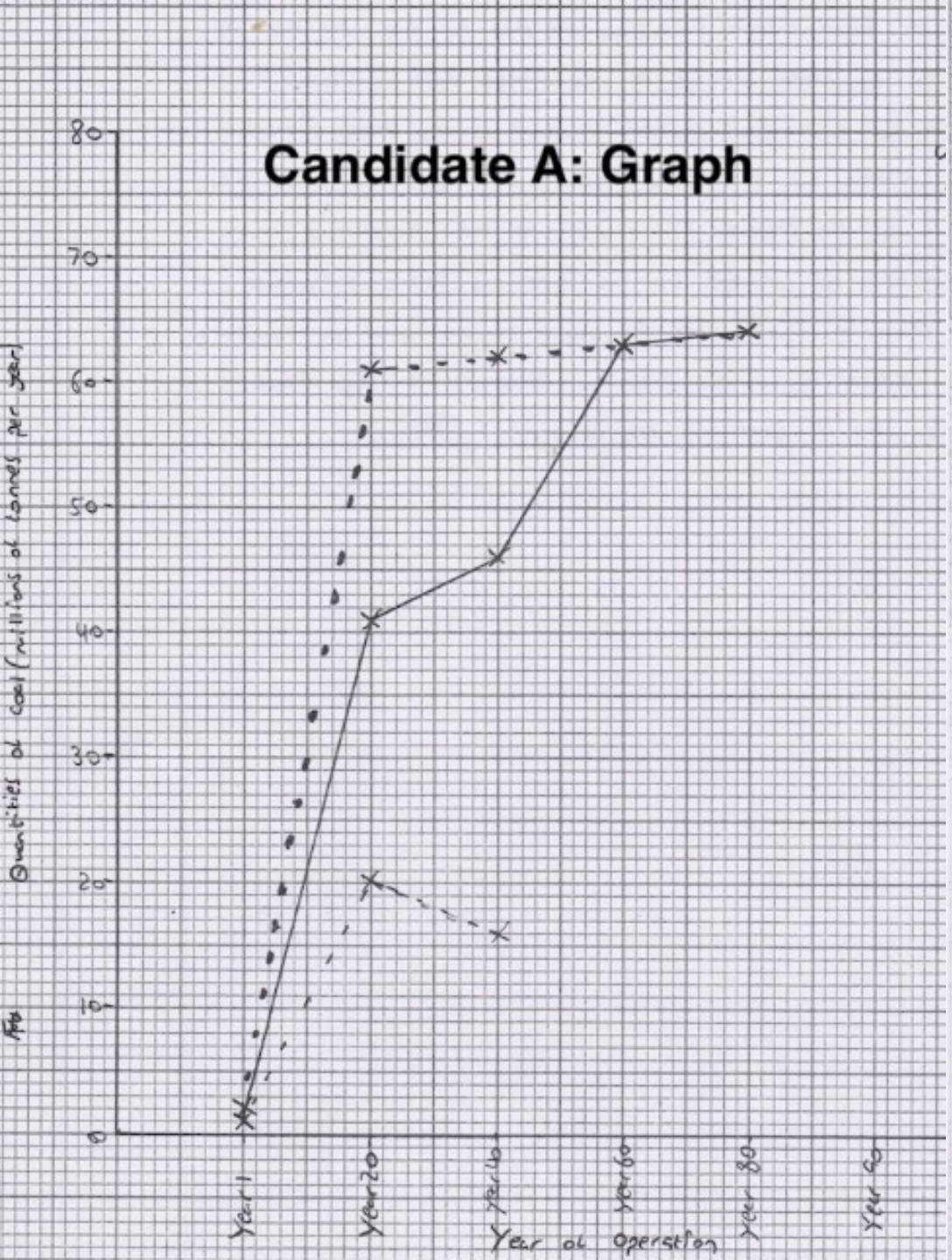
Plot the data with care

Make sure you reference the graph in your writing

**Table 1: Forecast of quantities of coal from Carmichael Mine  
(millions of tonnes per year)**

<b>Year of operation</b>	<b>Open Cast</b>	<b>Underground</b>	<b>Total</b>
Year 1	1	1	2
Year 20	41	20	61
Year 40	46	16	62
Year 60	63	0	63
Year 80	64	0	64
Year 90	0	0	0





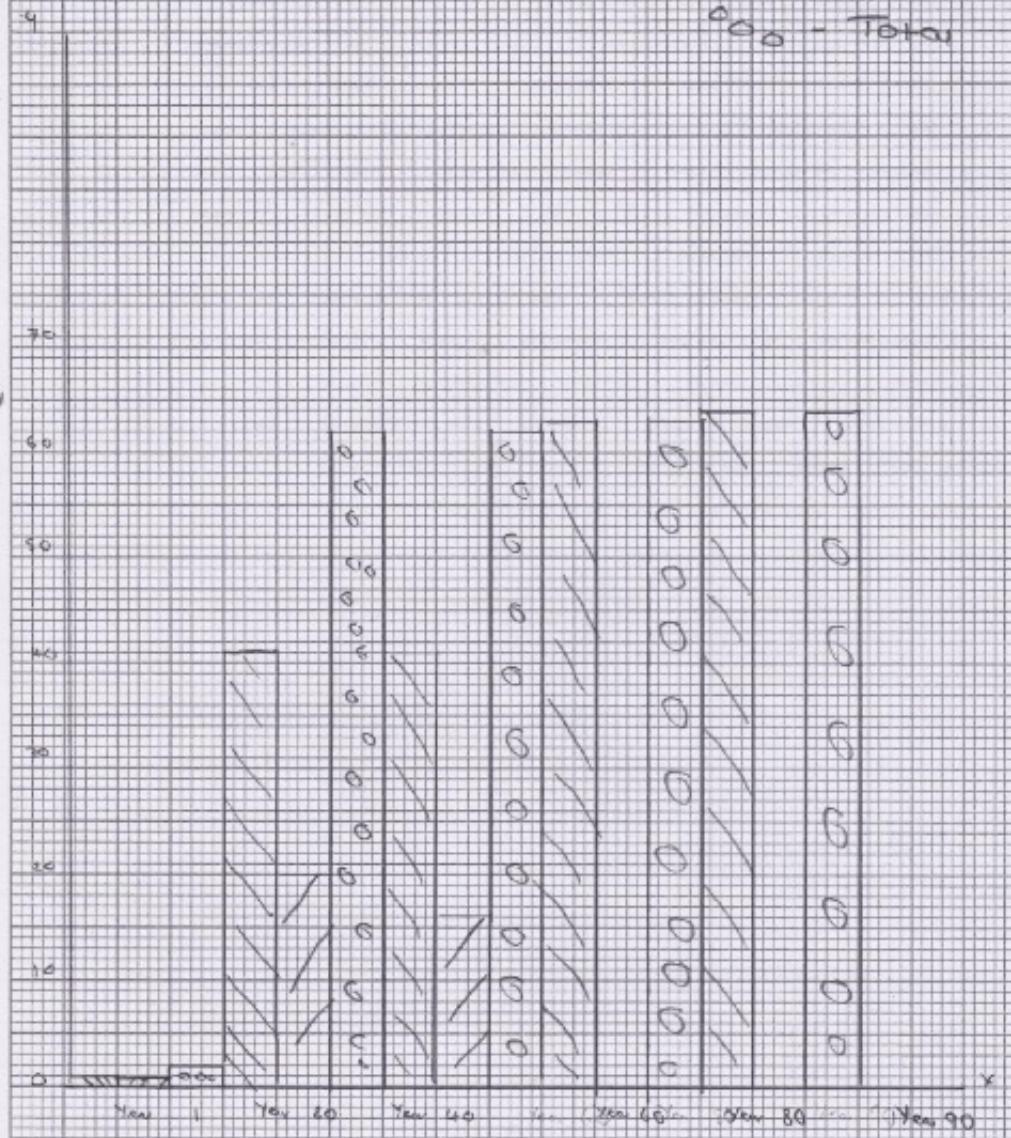


# Candidate B: Graph

a bar chart showing the  
 forecast of coal plan  
 Carmichael Mine

key  
 ||| - Open Cast  
 / / / - underground  
 o o o - Total

Y-axis: Quantity of coal in millions of tonnes per year



Year of Operation

# Decision/conclusion

This is important – 8 or 10 marks – leave enough time to do it justice

In the section, you're asked to make a decision and to justify it on the basis of the **greater overall benefits**.

This means setting out the arguments and weighing one up against the other.

You are likely to be saying:

"The developer's case for employment increases of over 120 for the area is very persuasive, and I was particularly impressed by their commitment to ensuring that these were mainly local jobs. However ..."

"The environmental concerns of those who oppose this plan are very clear. I too share their concerns regarding the potential visual pollution such a development might bring to this sensitive area but I am reassured by the ..."

- Make a decision based on what is provided – you cannot make up your own.
- Remember – there is no right answer. Either will be possible to argue. It is the strength and persuasiveness of your argument which is important.



You might think that you cannot prepare for an unseen case study – a decision making exercise that could be anything, anywhere... BUT

- This is a paper you **can** prepare for...
- This is a paper you **can** practice...
- This is a paper you **can** get better at...

Questions?