

Centre for Archaeological Fieldwork

School of Geography, Archaeology and Palaeoecology, QUB

CAF Data Structure Report: No. 111

Excavations at Dunluce Castle, Co. Antrim

Andrew Gault and Grace McAlister

VOLUME 2: FIGURES AND PLATES

ANT 002:003 & ANT 002:008



On behalf of





Plate 53: Trench 12, slate layer 1205 in plan, looking east



Plate 54: Trench 12, during removal of 1206, looking east



Plate 55: Trench 12 looking south



Plate 56: Trench 12, west facing section and wall 1211, south end of trench



Plate 57: Trench 12, post-excavation, looking south



Plate 58: Trench 12, brass mount (*photo provided by Tony Corey*)

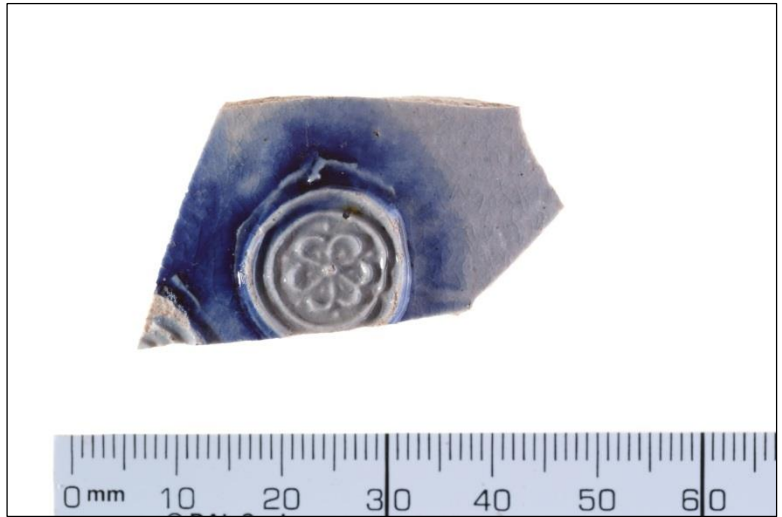


Plate 59: Trench 12, Westerwald Pottery (*photo provided by Tony Corey*)



Plate 60: Trench 13a, north extension post-excavation, looking south



Plate 61: Trenches 13a and 13b, aerial shot, looking south



Plate 62: Trench 13a, crotal bell (*photo provided by Tony Corey*)



Plate 63: Trench 13b, following removal of rubble 1302 and 1303, looking south



Plate 64: Trench 13b, east facing section south of wall



Plate 65: Trench 13b, east facing section north of wall



Plate 66: Trench 14, wall 1403, west facing elevation, looking east



Plate 67: Trench 14, post-excavation overhead of wall 1403, looking west



Plate 68: Trench 14, post-excavation, looking south (*photo provided by Tony Corey*)



Plate 69: Trench 15a, post-excavation, looking east



Plate 70: Trench 15a, seal matrix (*photo provided by Tony Corey*)



Plate 71: Trench 15a, seal matrix (*photo provided by Tony Corey*)



Plate 72: Trench 15b, after removal of 1503, looking west



Plate 73: Trench 16, wall 1607 and clay 1609, looking south



Plate 74: Trench 16, showing cobbled surface 1604, looking north



Plate 75: Trench 16, showing south edge of cobbled surface, looking south



Plate 76: Trench 16, north face of wall 1607



Plate 77: Trench 16, gully and jostle stone features



Plate 78: Trench 16, east facing section



Plate 79: Trench 17, following removal of 1703, looking east



Plate 80: Trench 17, south facing section



Plate 81: Trench 17, post-excavation, looking east



Plate 82: Trench 20, showing surfaces of 2002, 2006, 2008, 2009, looking west



Plate 83: Trench 20, following excavations of half sections, looking east



Plate 84: Trench 20, close up of drain, in plan



Plate 85: Trench 21, following removal of topsoil showing 2102 and 2105, looking south



Plate 86: Trench 21, sondage in north-west corner of trench showing subsoil, looking south

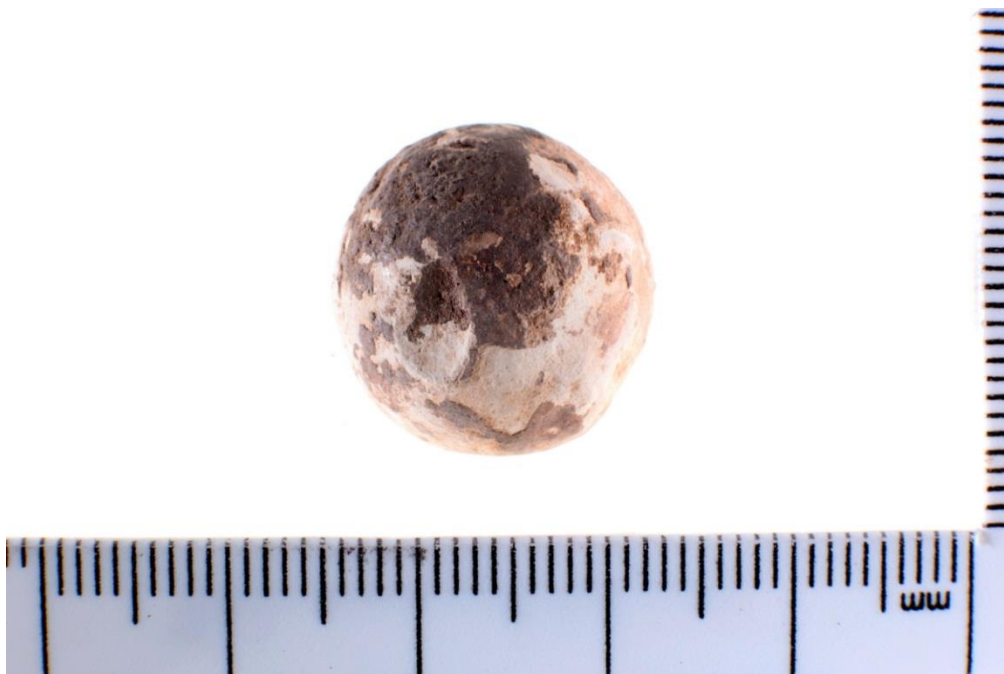


Plate 87: Trench 21, musket ball (provided by Tony Corey)



Plate 88: Trench 22a, post-excitation, looking north



Plate 89: Trench 22a, post-excitation northern half of trench showing 'ditch' 2222, looking west



Plate 90: Trench 22b, mid-excavation of metallated surface, looking west



Plate 91: Trench 22b (SF#602) Scottish Grey Ware (*photo provided by Tony Corey*)



Plate 92: Trench 22c, post-excitation, looking east



Plate 93: Trench 23a, post-excitation showing 2333 looking west (*photo provided by Tony Corey*)



Plate 94: Trench 23b, showing wall (2316) and cobbled surface (2314), looking east



Plate 95: Trenches 23a and 23b, aerial shot, taken from the north



Plate 96: Trench 23b, showing cobbled surface (2314), looking north (photo provided by Tony Corey)



Plate 97: Trench 23c, post-excitation (photo provided by Tony Corey)



Plate 98: Trench 23d, east facing section



Plate 99: Trench 25a, showing surface of 2508 and 2502, looking north



Plate 100: Trench 25a, showing blocked-up doorway (2542), looking east



Plate 101: Trench 25a, showing blocked-up doorway (2542), looking west



Plate 102: Trench 25a, post-excavation aerial shot



Plate 103: Trench 25a, pivot stone (*photo provided by Tony Corey*)



Plate 104: Trench 25b, post-excavation, looking south



Plate 105: Trench 25b, post-excavation, looking west

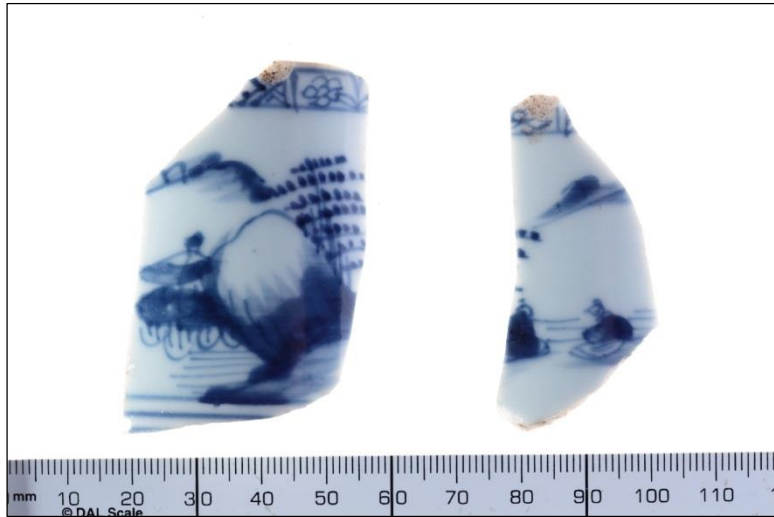


Plate 106: Trench 25b, Chinese Porcelain (*photo provided by Tony Corey*)



Plate 107: Trench 25c, post-excavation showing wall 2530, looking south



Plate 108: Trench 25c, post-excavation showing wall 2530, looking north



Plate 109: Trench 27, post-excitation showing 2703, looking south



Plate 110: Trench 27, post-excitation showing 2703, 2706 and 2707, looking north



Plate 111: Trench 28, before extension showing 2802 and 2803, looking east



Plate 112: Trench 28, sondage through 2805 showing 2802 and 2803, looking east



Plate 113: Trench 28, post-excavation looking east



Plate 114: Trench 28, post-excavation, looking west



Plate 115: Trench 21, tin glazed earthenware (*photo provided by Tony Corey*)



Plate 116: Trench 30a, post-excavation showing 3002, looking south



Plate 117: Trench 30b, post-excitation showing 3002, looking east



Plate 118: Trench 30c, post-excitation of 3002, looking east



Plate 119: Trench 30d, post-excavation showing 3016, looking north



Plate 120: Trench 30e, post-excavation showing 3003



Plate 121: Trench 30f, post-excitation showing metallised surface (3004)



Plate 122: Trench 30g, post-excitation



Plate 123: Trench 30h, post-excitation, looking north



Plate 124: Trench 30h, rubble collapse 3011, looking west



Plate 125: Trench 31, after removal of 3102, looking west



Plate 126: Trench 32, post-excavation showing 3202, looking north